

How to Use Wall Wisher

What is Wall Wisher ?

"Wall Wisher" is a Web 2.0 free online tool where anyone can build a "wall".

Everybody else can then go onto the internet and stick post-it notes electronically onto the wall, (and include linked Pictures, You Tube videos, PowerPoints, PDF documents, Excel Spreadsheets, or web page links). It was originally designed for birthday, anniversary or get well soon etc wishes. A whole group of people could add their messages for someone; and that person could then read them on the web. However, Wall Wisher can be used for educational purposes as well.

If the wall is set to "public", then online visitors can add a comment to the wall by double clicking on it and typing text in. (Comments are limited to 160 characters).

If post-its are overlapping on the page, you can move them by grabbing their title bar with the mouse. Mousing over notes highlights them, and brings the note forward. You can delete notes in edit mode by clicking the top right hand "X".

The owner / creator of the wall can log on, and delete inappropriate messages, and move the post-it notes to permanent positions, as well as editing them. The owner can also change the color scheme at any time, and can also reset the wall to private, (thereby "locking" or "closing" the wall). The owner has to be logged into Wall Wisher to do this.

Walls can also be used as a quick "one stop shop" for web links and resources on a particular subject, and thus not opened for public comment.

(See later in this document for several weblinks to all sorts of good examples of wall wisher walls that people have made on the internet).

Personally I love the tool, because it is so quick and easy to use. However, the big drawback is that young people could set up a wall for the sole purpose of posting all sorts of horrible messages about someone they do not like (eg. Cyber Bullying). Also "open" or "public" walls could be "flamed" and "spammed" with inappropriate and unwanted post-its at any time, so it is probably best to regularly monitor walls that you have created, and close any wall down to the public, (by setting it to private), if it starts getting "grafittied" or attacked.

How to Get Started:

Go to the website main page at:

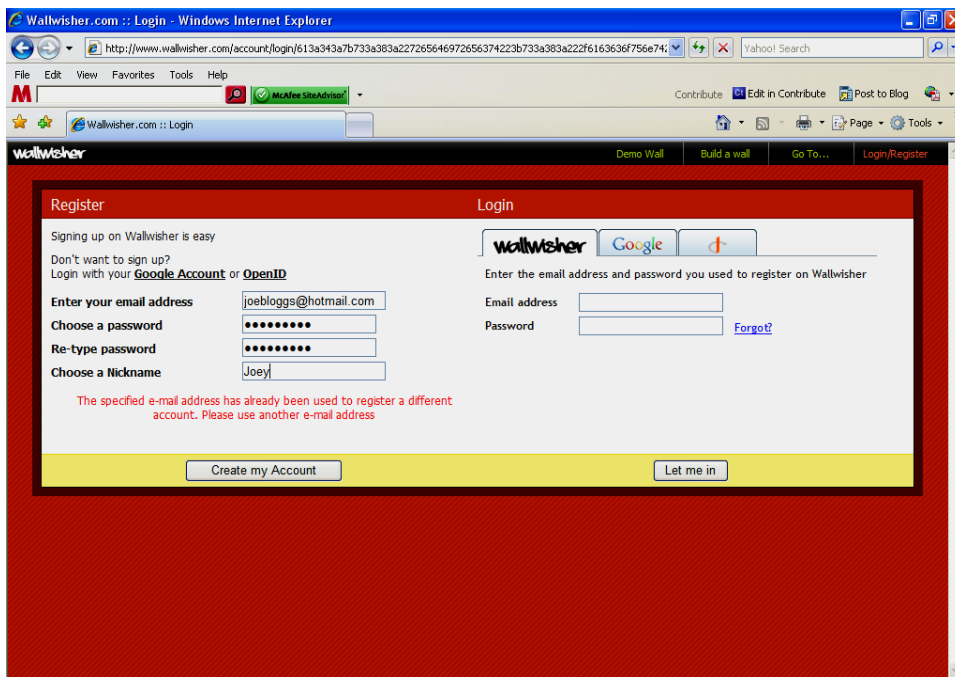
<http://www.wallwisher.com/>

How to Use Wall Wisher

If it is our first visit and we decide to build a wall, we have to supply our email address, and wall wisher will send us a password for logging on and maintaining our wall by email to this address later on. The drawback to this setup method is that the emailed password will be something hard to remember like “jkyzaq”, but there is a facility to go and change it. (see later below) .

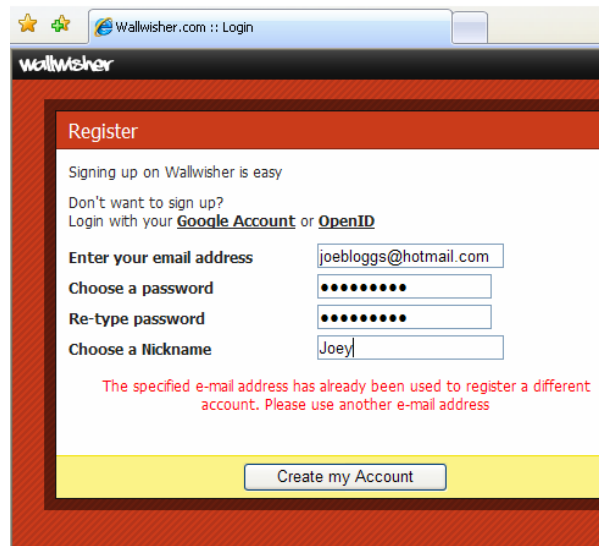
So on our first visit, we are better off logging in, and setting up an account, and we get to choose our own password as we do this.

To log in, click the top right hand corner Login/Register button, and then you will be taken to a very bright red screen to fill out like this one:



The screenshot shows a web browser window titled "Wallwisher.com :: Login - Windows Internet Explorer". The address bar shows a URL starting with "http://www.wallwisher.com/account/login/". The page has a red background and a white registration form. The form is divided into two sections: "Register" on the left and "Login" on the right. The "Register" section includes fields for "Enter your email address" (containing "joebloggs@hotmail.com"), "Choose a password", "Re-type password", and "Choose a Nickname" (containing "Joey"). A red error message below these fields states: "The specified e-mail address has already been used to register a different account. Please use another e-mail address". The "Login" section includes fields for "Email address" and "Password", with a "Forgot?" link. At the bottom of the form are two buttons: "Create my Account" and "Let me in".

Fill the screen out like this: (and then click “Create my Account”)

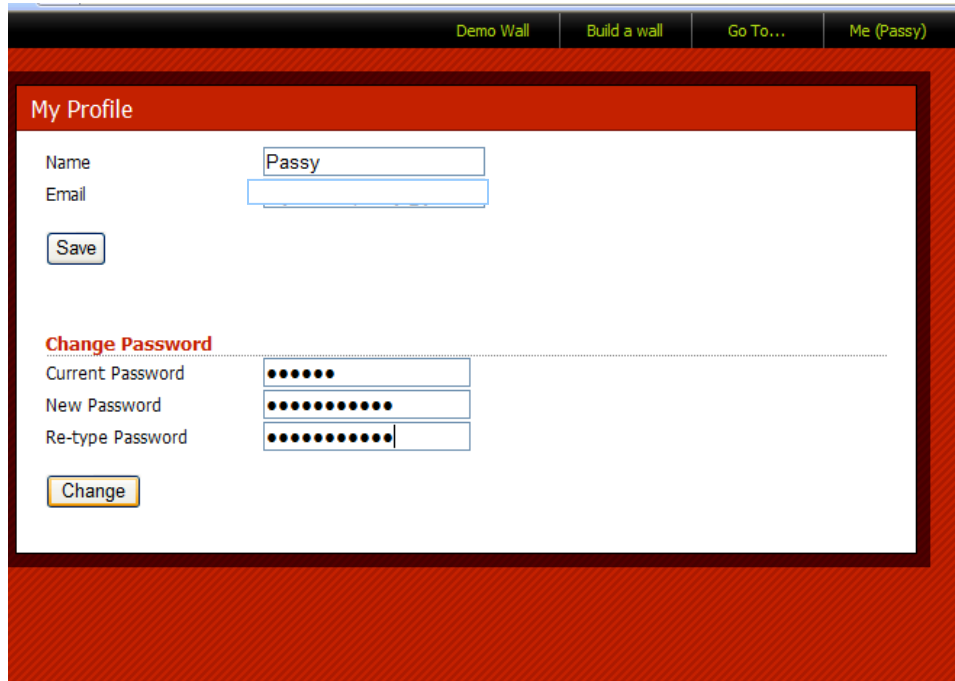


This is a close-up view of the registration form from the previous screenshot. It shows the "Register" section with the following details: "Signing up on Wallwisher is easy", "Don't want to sign up? Login with your [Google Account](#) or [OpenID](#)", "Enter your email address" field with "joebloggs@hotmail.com", "Choose a password" field with masked characters, "Re-type password" field with masked characters, and "Choose a Nickname" field with "Joey". The red error message is visible: "The specified e-mail address has already been used to register a different account. Please use another e-mail address". At the bottom is a "Create my Account" button.

How to Use Wall Wisher

Changing Your Password

If you need to change your password, then sign in (login with your current password), and then choose and click “My Profile” which will take you to a screen where a new password can be entered in:



Demo Wall Build a wall Go To... Me (Passy)

My Profile

Name

Email

Change Password

Current Password

New Password

Re-type Password

How to Build a Wall

Once we are logged in, we can click on the “Build New Wall” option, and we will be taken to the following screen:

This takes us to a setup screen, where we can add a corner picture, a Title and sub-title text, Privacy settings for read and update, and choose a URL ending name for our wall. (All walls commence with: www.wallwisher.com/wall/ and the name suffix we choose can be 6 to 20 letters and/or numbers long).



Preferences..

Choose Wall URL (optional):

6 - 20 chars. Letters numbers and - only.

Who can view:

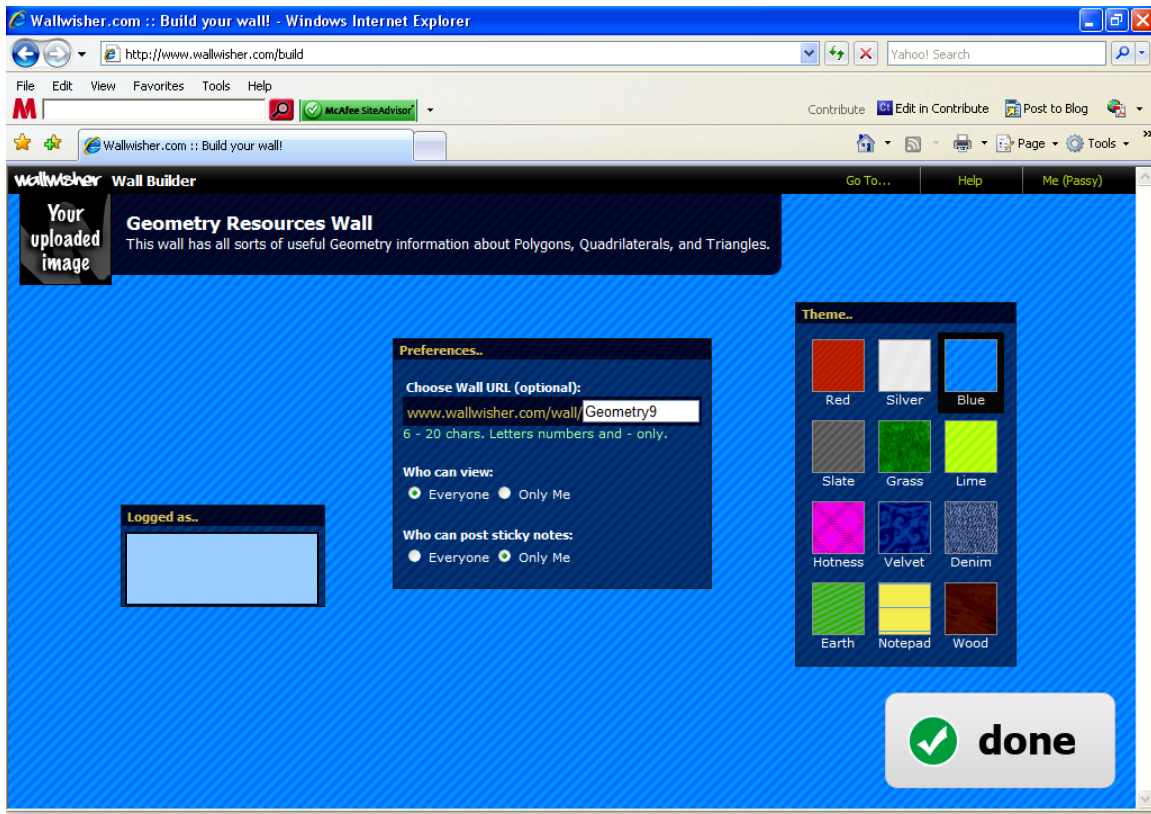
Everyone Only Me

Who can post sticky notes:

Everyone Only Me

How to Use Wall Wisher

On the setup page we also choose our color scheme for the wall from the presets, and click “Done” down the bottom right hand corner when finished.



This sets up our initial wall, but we can always log in at any time and do “Edit Wall” and change any of these settings.

Note that if we choose our own top left hand image from our PC, rather than one of the set ones provided, the image will only appear after our wall has been built.

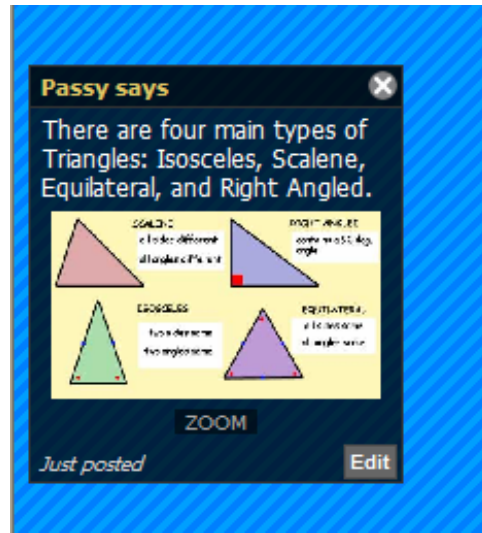
We can then start developing our wall.

As well as entering text into a post to the wall,

We can also find images to use on our wall from Google images, and then type the URL location of the image (from the top of web browser address box) into a wall wisher box while we are editing our wall. (We have to hope that the image will remain at this URL for as long as we need to use our wall.

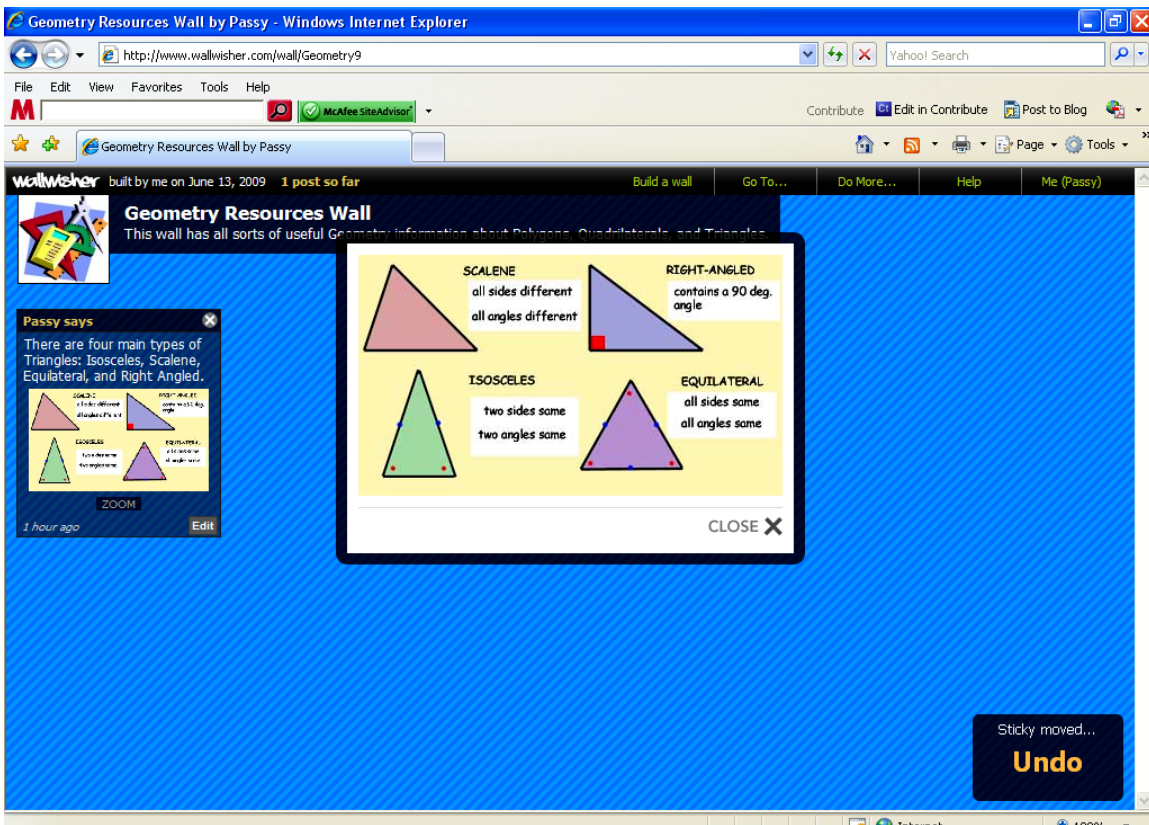
See the example of this shown below:

How to Use Wall Wisher



In the bottom box of the post, we have typed the URL of a nice image we found using Google, and our box will link to the image as shown on the right above.

And if we click “ZOOM” underneath the image, it will temporarily show us the image on the wall, at a readable size like this:



How to Use Wall Wisher

Sometimes we do not get the image preview, but instead a colored rectangle that has a clickable "VIEW" option on it.

We can also add links to Web Pages in the URL box on the post-it edit box.

Eg. There is a web page that describes Angles in parallel lines at:

<http://argyll.epsb.ca/jreed/math7/strand3/3202.htm>

and part 2 at:

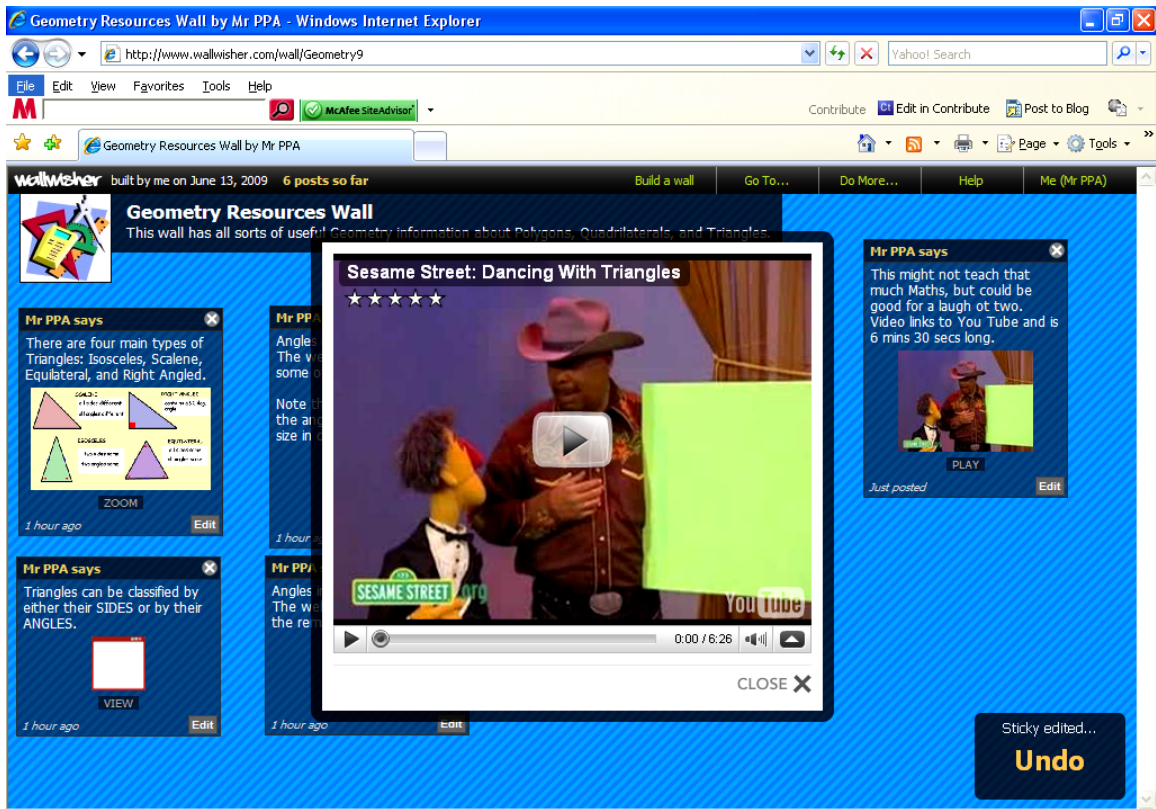
<http://argyll.epsb.ca/jreed/math7/strand3/3203.htm>

So we can set up our post-it with the web page in the URL and do this:

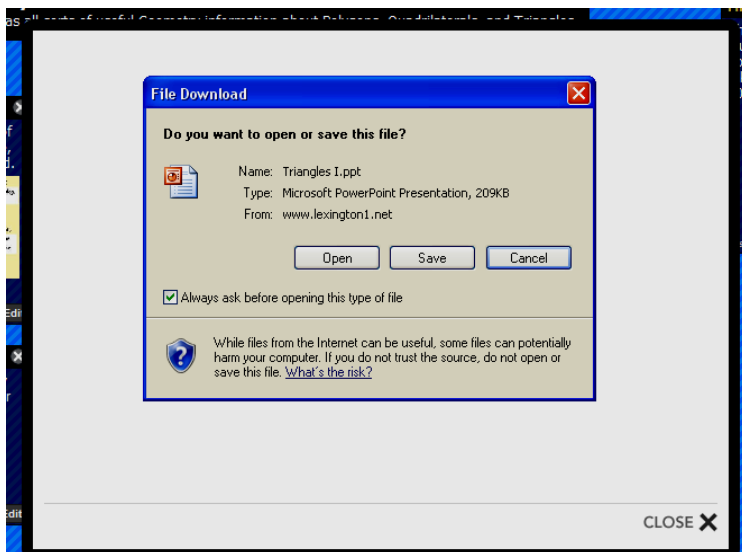
The screenshot shows a Windows Internet Explorer browser window displaying a Wall Wisher post-it note titled "Geometry Resources Wall". The post-it note is a grid with two rows. Each row contains a diagram of two parallel lines, p and q , intersected by a transversal t . The top row is labeled "Opposite angles are congruent" and shows angles 1, 2, 3, 4 on line p and 5, 6, 7, 8 on line q . The bottom row is labeled "Corresponding angles are congruent" and shows the same diagram. To the right of the diagrams, text explains that sets of opposite angles are formed and lists congruence statements: $\angle 1 \cong \angle 4$ and $\angle 2 \cong \angle 3$ for the top row, and $\angle 5 \cong \angle 8$ and $\angle 6 \cong \angle 7$ for the bottom row. It also states that corresponding angles are on the same side of the transversal t , with $\angle 1 \cong \angle 5$ and $\angle 3 \cong \angle 7$ on the left side, and $\angle 2 \cong \angle 6$ and $\angle 4 \cong \angle 8$ on the right side. The post-it note has a "VIEW" button and a "CLOSE" button. A "Sticky edited..." message with an "Undo" button is visible in the bottom right corner.

We can even insert You Tube videos onto our wall, simply by pasting the top of screen URL from You Tube into our post-it note. Eg. We do not use the embed Html, we simply use the web address, and it turns out like this:

How to Use Wall Wisher

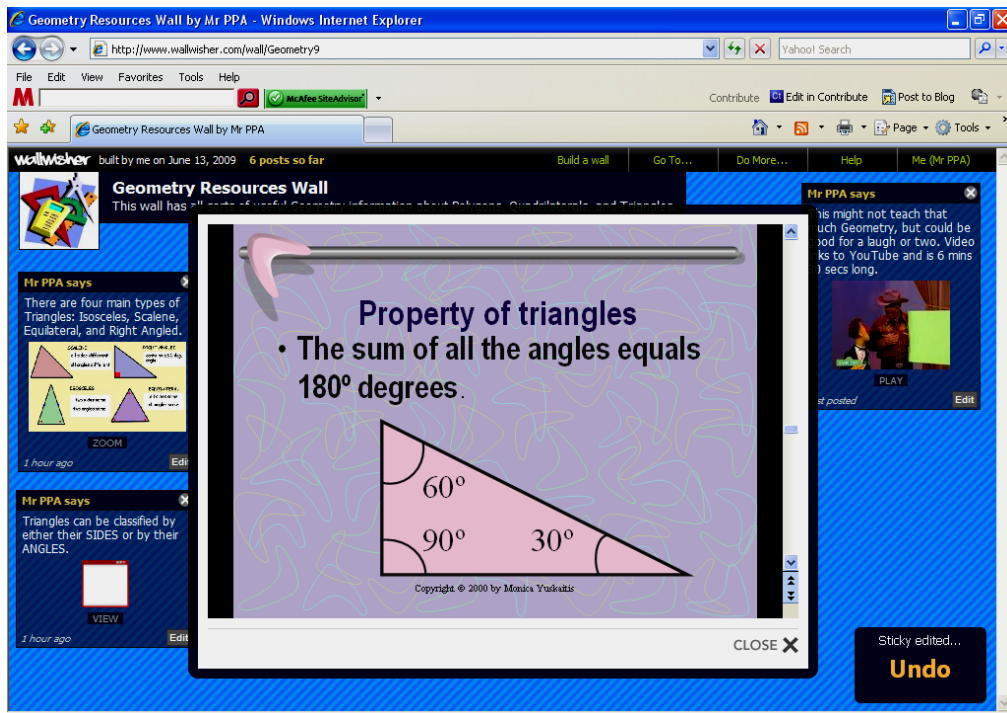


We can also put web links to Powerpoints that we find using Google, and we get a window where we can open and view the Powerpoint like this:



We then click open on the Powerpoint, and it will play in the above window, as shown below:

How to Use Wall Wisher



We can also type in the web addresses of PDF documents, and they will display ok in a Wall Wisher window as well. (Although they may be small and difficult to read, but in this case click the save button, and download the PDF to your PC).

As of June 2009, Slideshare presentations, on very rare occasions, do not work 100% ok on Wall Wisher. BUT if the Slideshare has a “Get File” tab on the top of it, then click this, then click on “open” on the PPT, wait for it to load in, and then we can usually view the PPT a-ok in the Wall’s window.

OR If we have a slideshare presentation we really want to use, we can also try and download it from the Slideshare site at : www.slideshare.com as a Powerpoint file, (using the “Get File” tab), and then put this PPT file onto a website somewhere. We can then link to that site from our Wall Wisher wall.

My advice is go ahead and use Slideshare on walls anyway.

Keeping Track of the Wall's URL's:

Just as a precaution, it is a good idea to also keep a word document going and copy all the web links into it that are used on the wall, just in case something was to ever go wrong with the wall. Eg. Sometimes the wall overlaps post-its, or might lose one, as happened at the bottom right corner of the Geometry Wall I made.

Embedding Walls in other Web Pages

We can also obtain “embed” Html code for our wall by clicking the top tab “Do More” and then clicking on “Embed”, which will then supply the Html code to us.

How to Use Wall Wisher

Deleting “Post-Its” from a Wall

When logged in, and in edit mode on a wall, each post-it has an “X” in the top right hand corner. Clicking on this “X” will delete the post-it, so be careful !

To see a sample finished wall of resources links, click the following :

<http://www.wallwisher.com/wall/Geometry9>

Sample Wall Wishers for Teachers

The following is a good example of Brainstorming:

<http://www.wallwisher.com/wall/slavery>

The following one is a History of the UK’s involvement in Africa :

<http://www.wallwisher.com/wall/slchistoryscramble>

Causes of World War II :

<http://www.wallwisher.com/wall/isthistory>

Another one on causes of World War II:

<http://wallwisher.com/wall/matthewj>

And yet another one on the very popular World War II:

<http://wallwisher.com/wall/SvqmKEV00p>

This is a good example one for English teachers :

<http://wallwisher.com/embed/vocabulary>

A resources page of links to material that might be useful for English as Second Language Teachers:

<http://www.wallwisher.com/wall/teachersweb20>

A Wall where students and teachers did some post Mathematics Exam analysis, and brainstormed ideas of what could be done to improve next time:

<http://www.wallwisher.com/wall/mathsexam9>

and finally, a wall of Geometry resources for a 2 week Mathematics Unit:

<http://www.wallwisher.com/wall/Geometry9>

Enjoy, “Passy” June 2009.